



JEFF EPSTEIN  
ELIZABETH O'REILLY  
CAROL SLOANE

3 PAINTERS

**September 10 - October 18, 2008**

CALDBECK GALLERY

12 Elm St Rockland Maine 04841 207.594.5935 [www.caldbeck.com](http://www.caldbeck.com) [caldbeck@midcoast.com](mailto:caldbeck@midcoast.com)

## JEFF EPSTEIN

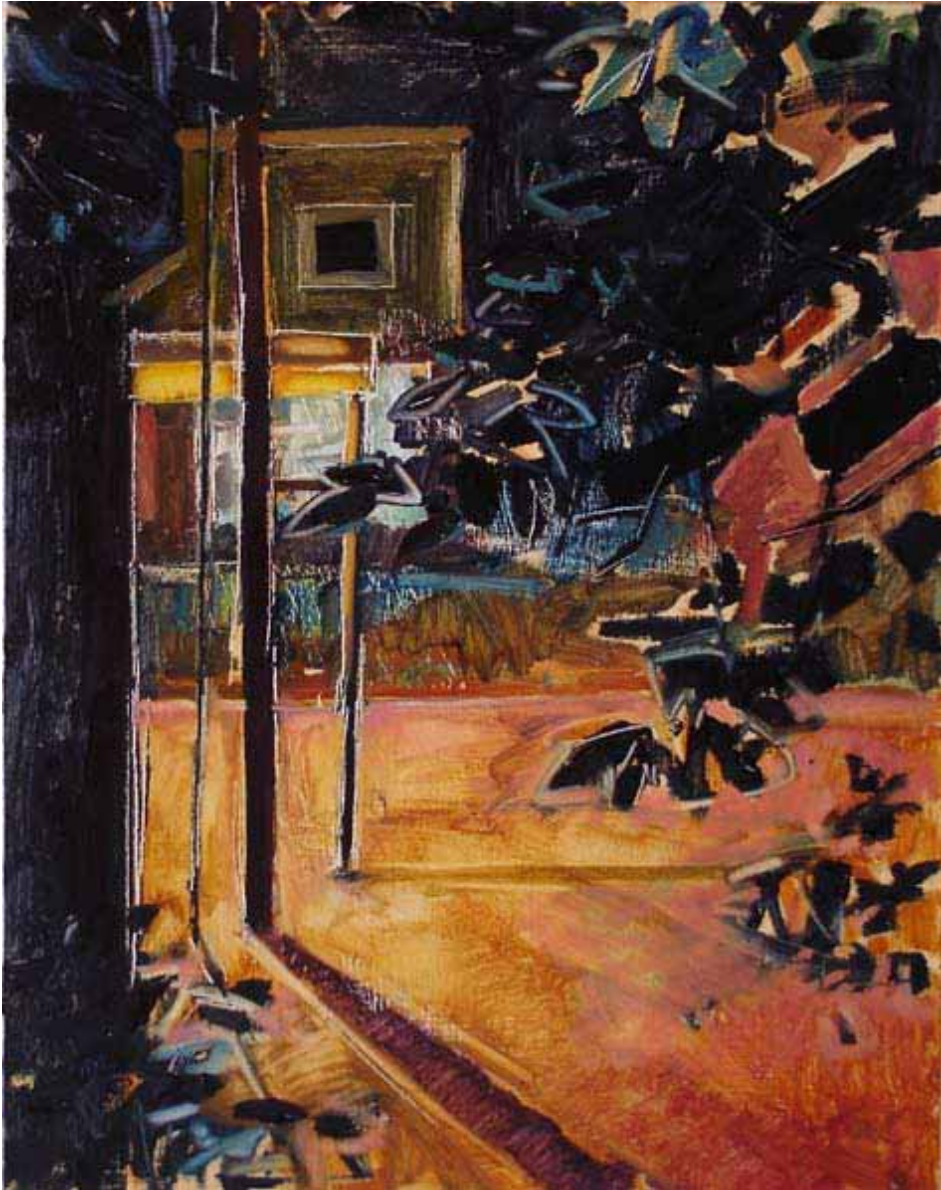
Jeff Epstein travels to Cushing, Maine each summer to visit and paint with Lois Dodd. In his paintings he loves to explore the intersection of the man-made and the natural landscape. He explains that “the un-peopled places described in my work usually share indications of human presence yet the pervasive feeling is one of solitude”. The work in this exhibit reflects his description. Epstein has exhibited in New Jersey at The Trenton City Museum, The Newark Museum, and The Noyes Museum of Art, and in Maine, at the Caldbeck for the past 3 years, and at CMCA.



Jeff Epstein NIGHT COTTAGE WITH PILES OF DIRT, PEI, 2008 oil on panel 17 x 20 inches



Jeff Epstein HELEN FRANKENTHALER'S AZALEA, IN THE WISSEMANNS' YARD, SOUTHOLD, NY, 2008  
oil on panel 11 x 14 inches



Jeff Epstein STREET LIGHT NO 14, 2007 oil on panel 14 x 11 inches



Jeff Epstein SAMMY'S FIREWORK, CUSHING, ME, 2008 oil on panel 11 x 14 inches



Jeff Epstein TENT IN FOG, 2007 oil on panel 20 x 15 inches

## ELIZABETH O'REILLY

Elizabeth O'Reilly, also a friend of Lois Dodd's, has painted in Maine each summer for several years. Her work in this show focuses on the plants in Leslie Land's garden, where so many artists have found inspiration. O'Reilly received her undergraduate degree from St. Patrick's College, National University of Ireland in Dublin, and her MFA from Brooklyn College in New York where she and Epstein both met Lois Dodd. Innumerable exhibitions of her work have been mounted in Ireland, New York City, Philadelphia, and elsewhere. This is her first Caldbeck show.



Elizabeth O'Reilly GARLIC SCAPES, 2007 oil on panel 13 x 16 inches



Elizabeth O'Reilly BUDLEA AND BLUE SKY, 2001 oil on panel 20 x 22 inches



Elizabeth O'Reilly ALIUM AND SILVER TANGLE, 2004 oil on panel 22 x 18 inches



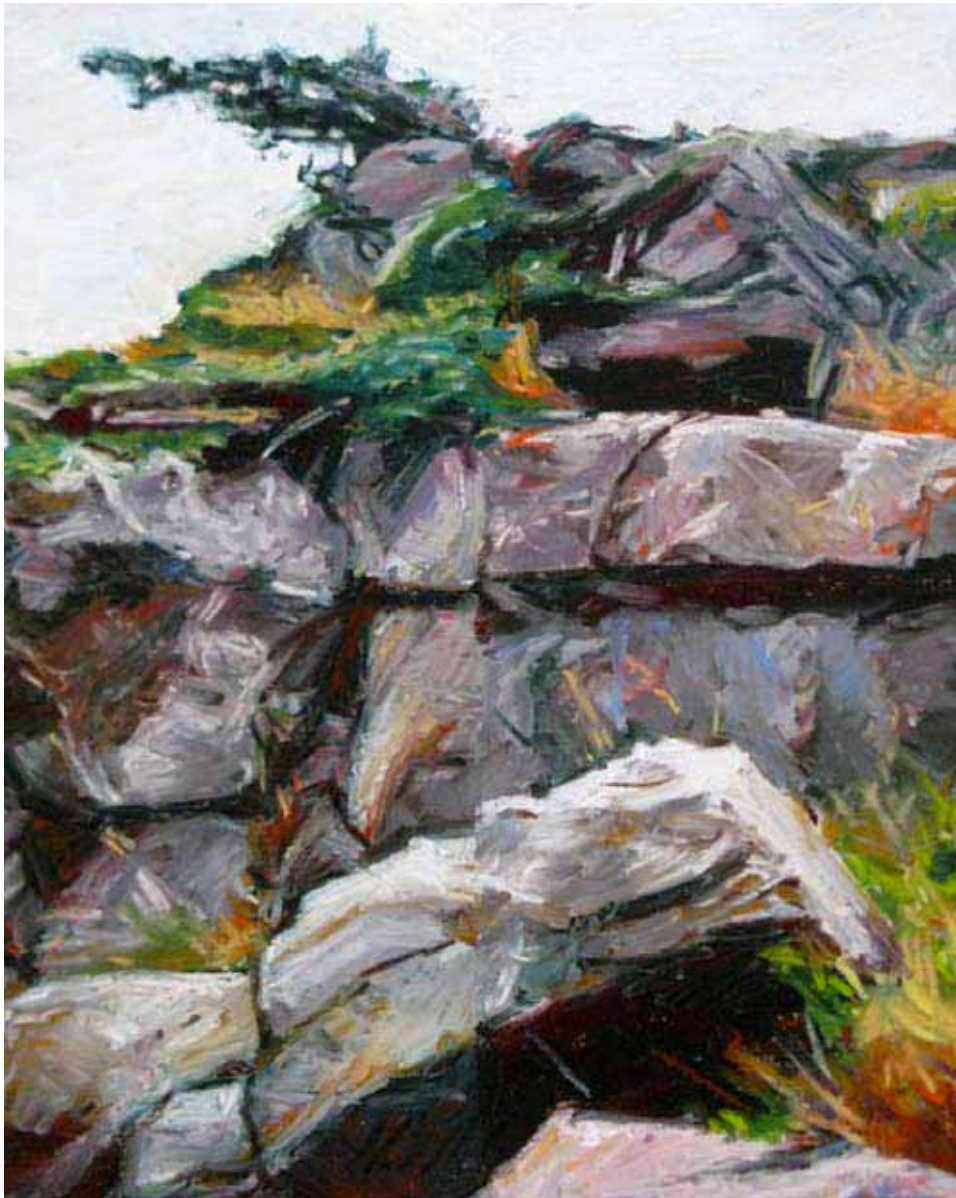
Elizabeth O'Reilly BLACK HOLLYHOCKS, 2004 oil on panel 18 x 10 inches



Elizabeth O'Reilly GLOBE THISTLE, 2006 oil on panel 15 x 17 inches

## CAROL SLOANE

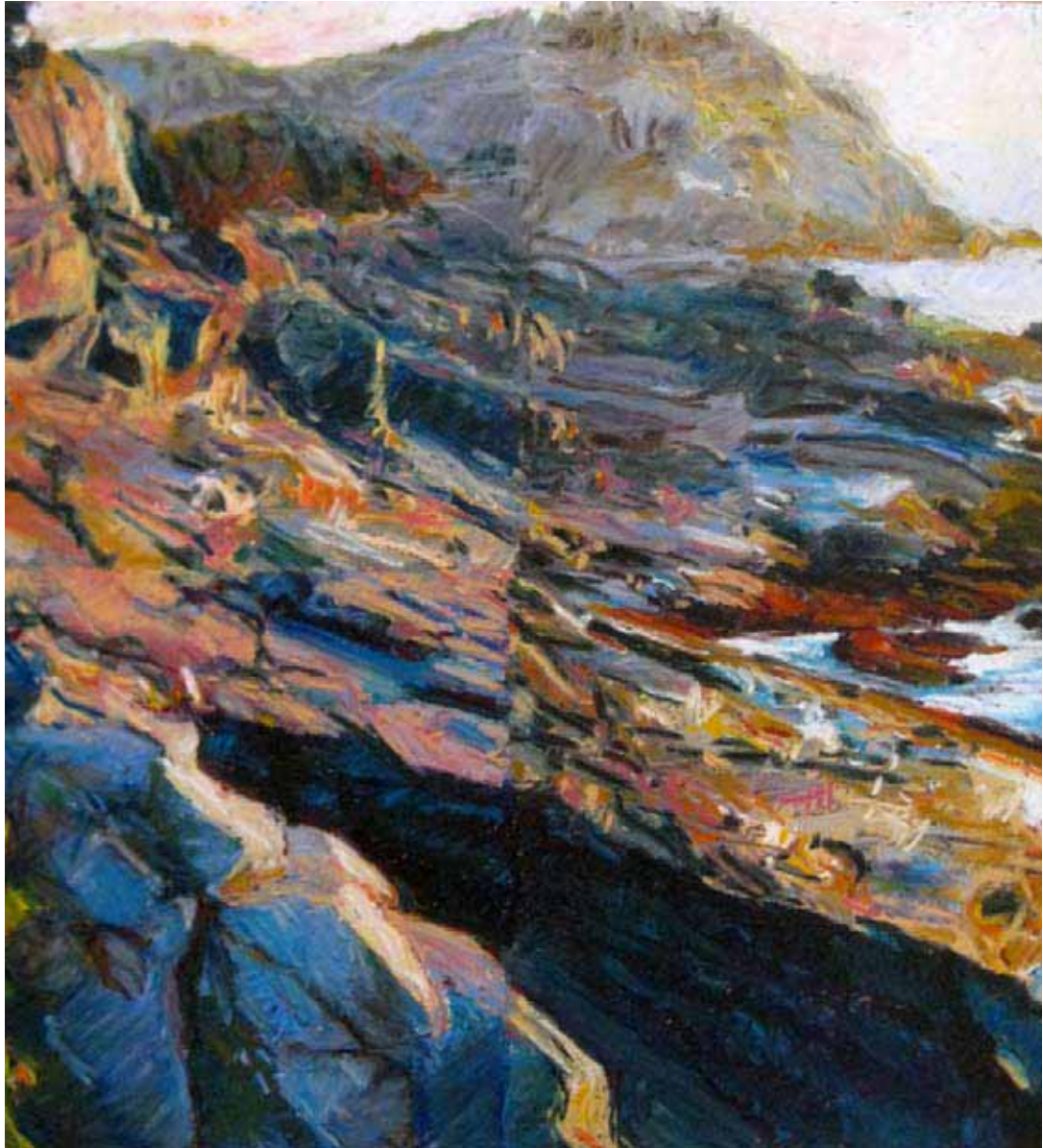
Carol Sloane's oils were painted over the past few years during visits to Monhegan Island where, in 2002, she spent two months on a Carina House Residency. She studied at the Vermont Studio Center, the Art Students League of New York, and the University of Wisconsin/Madison. Exhibits include Downtown Gallery in Washington, Elan Fine Arts formerly of Rockland, the Portland Museum of Art Biennial, CMCA, Round Top Center for the Arts, formerly of Damariscotta, and the Caldbeck.



Carol Sloane JUNIPER, 2003 oil stick on tinted panel 15 1/2 x 19 1/4 inches



Carol Sloane WOODS STUDY MONHEGAN, 2002 R+F oil stick over acrylic washed paper 15 1/4 x 19 inches



Carol Sloane MONHEGAN MORNING LIGHT, 2003 R+F oil stick on tinted panel 26 1/2 x 24 3/4 inches



Carol Sloane WOODS STUDY VI, 2003 oil stick on acrylic tinted paper 15 1/4 x 19 inches



Carol Sloane MONHEGAN SPRUCES, 2003 R+F oil stick on tinted panel 23 x 18 1/2 inches



Carol Sloane GULL COVE STUDY III, 2005 R+F oil stick on tinted paper 17 1/2 x 25 1/2 inches

## CALDBECK GALLERY

12 Elm St Rockland Maine 04841 207.594.5935 [www.caldbeck.com](http://www.caldbeck.com) [caldbeck@midcoast.com](mailto:caldbeck@midcoast.com)

Hours : Tuesday - Saturday 11-5pm