



WHITNEY WING OPPERSDORFF

Through My Window

May 13 - June 13, 2009

CALDBECK GALLERY

12 Elm St Rockland Maine 04841 207.594.5935 www.caldbeck.com caldbeck@midcoast.com

WHITNEY WING OPPERSDORFF

Through My Window

In "Through My Window" Wing Oppersdorff gives us a slice of life on Coleman Pond in Lincolnton, which is where she lives. The artist's collages in "Lexan", wood, and heat-sensitive shrinking plastic are inspired by all the activities that she sees through her studio window. She writes, "Coleman Pond is my Giverney, and like Monet, I try to capture the changing light of the sun and moon on water and ice. I hear the night-time slap of a beaver's tail in summer, and the courtship grunt of the bullfrog, the cry of the loon as he defends his territory from intruders, and I see the great blue heron fly by like a modern-day pterodactyl. In the winter, snowmobiles roar by, skiers kick and glide, fishermen drill holes and set up shop, skaters skim the dark ice leaving a frozen wake of scratched curves, and fox and mink patrol the shoreline. Overhead, eagles scan the ice; they land to eat the remains of the fishermen's catch. Winter gives way to spring, pools of water attract otter, the ducks splash down, and birds pair up. Then geese and goslings paddle by, Pileated woodpeckers knock on the pines, and neighbors and strangers wave as they pass by in their kayaks and canoes." Oppersdorff received her BA in Painting from Sarah Lawrence College in Bronxville, NY; further studies include a painting residency at the Skowhegan School of Painting and Sculpture and a masters in art history from Columbia University in New York, NY. She has been showing with the Caldbeck since 1998; this is her third solo show with the gallery.

Front Cover : HALO OF WASPS, 2009 mixed medium 12 x 12 inches



DUET, 2009 mixed medium 19 1/4 x 11 inches



FULL MOON, COLEMAN POND, 2009 mixed medium 9 1/2 x 13 inches



BLACK ICE, 2008 mixed medium 9 1/2 x 14 inches



POND BARITONE, 2009 mixed medium 12 x 12 inches



SKATING AT DUSK, 2008 mixed medium 12 x 12 inches



SPRING THAW, 2008 mixed medium 12 x12 inches



THROUGH THE TREES, 2008 mixed medium 12 x 12 inches



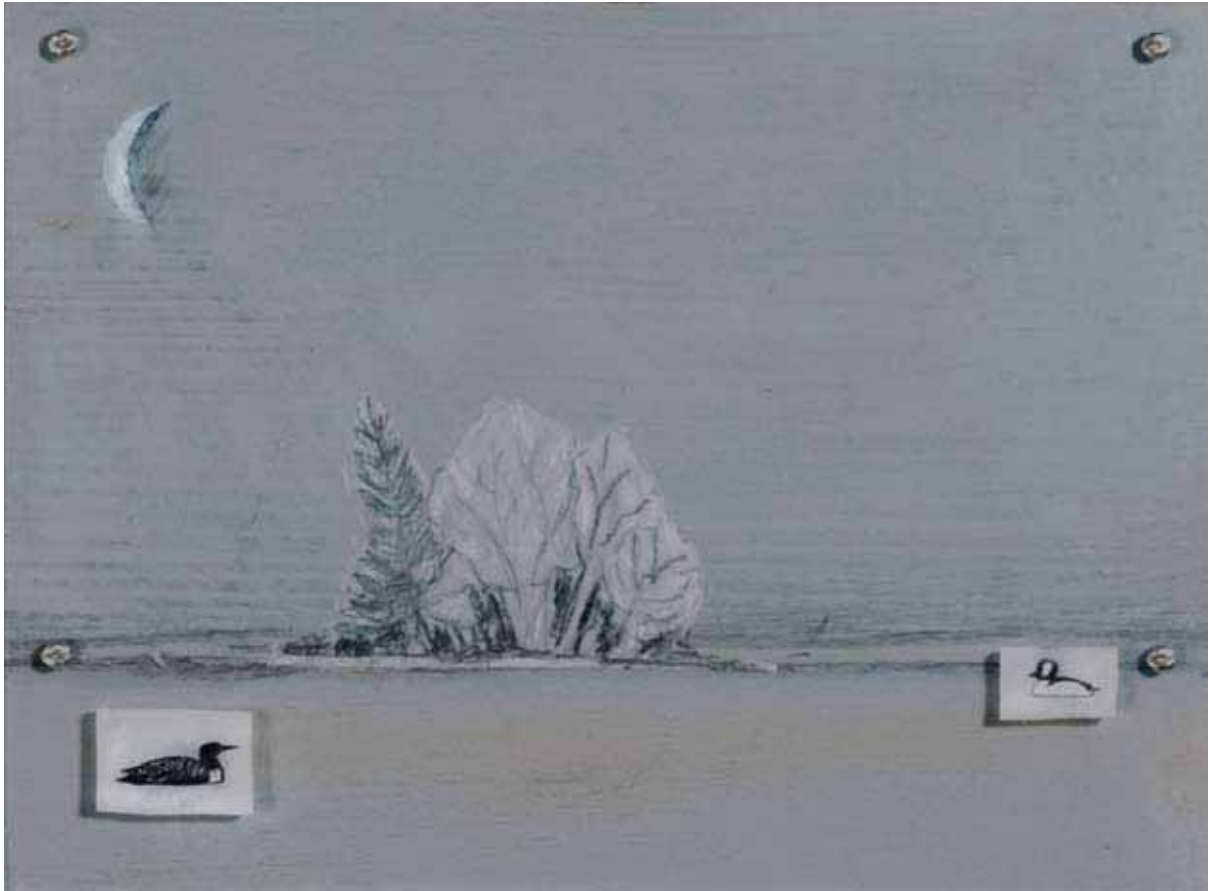
EMERGING, 2008 mixed medium 9 1/2 x 14 inches



ICICLES, 2008 mixed medium 12 x 12 inches



RUNNING FOX, 2009 mixed medium 9 1/2 x 14 inches



LOON ISLAND IN MOONLIGHT, 2009 mixed medium 5 1/2 x 7 1/4 inches

CALDBECK GALLERY

12 Elm St Rockland Maine 04841 207.594.5935 www.caldbeck.com caldbeck@midcoast.com

Hours : Tuesday - Saturday 11-5pm