



KRISTIN MALIN

SURFACE, WATER, AND LIGHT

**June 18 - July 12, 2008**

CALDBECK GALLERY

12 Elm St Rockland Maine 04841 207.594.5935 [www.caldbeck.com](http://www.caldbeck.com) [caldbeck@midcoast.com](mailto:caldbeck@midcoast.com)

# KRISTIN MALIN

## SURFACE, WATER, AND LIGHT

In her first solo show at the Caldbeck, Kristin Malin's work in oil on panel is predominantly 16x16 inches and are about the bodies of water where she lives in Georgetown. Malin believes in what she calls the "seduction of the motif". She says, "I don't paint exactly what I see; the motif is an emotional and visual departure point for me. I am visually excited by small events in nature that might go unnoticed: a slice of water, an opening in clouds, the intersection of grasses and water. They provide infinite moments of beauty." She grew up in New Orleans and received her BFA in painting from Louisiana State University in 1979, followed by studies at The New York Studio School and an MFA in painting from Columbia University. She has shown with the O'Farrell Gallery, formerly of Brunswick, has executed exhibition murals for the Maine Maritime Museum, was juried into the 2007 Biennial at CMCA, and is included in Carl Little's The Art of Maine in Winter.

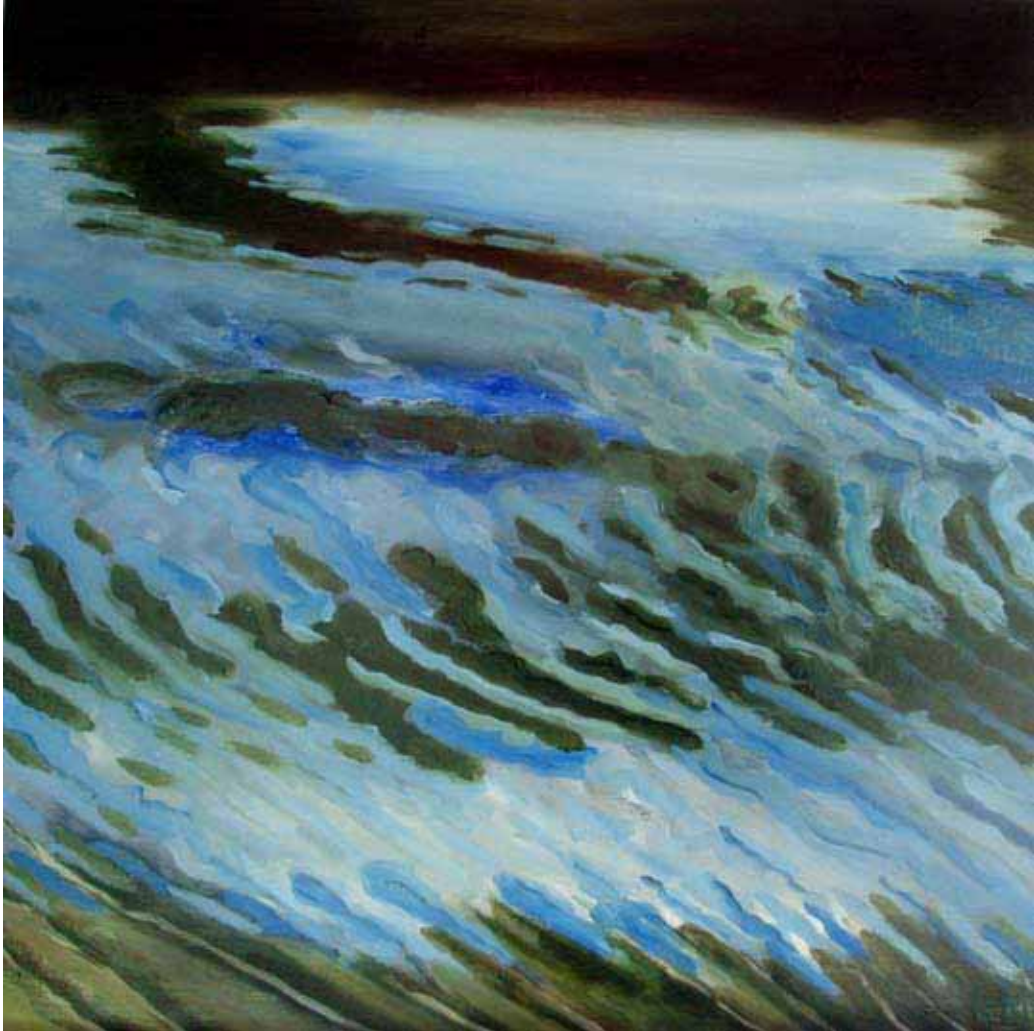
Front Cover : SURFACE: BLUE AND GREEN, 2008 oil on aluminum 5 x 7 inches



ROBINHOOD COVE, AUTUMN, 2007 oil on canvas 32 x 36 inches



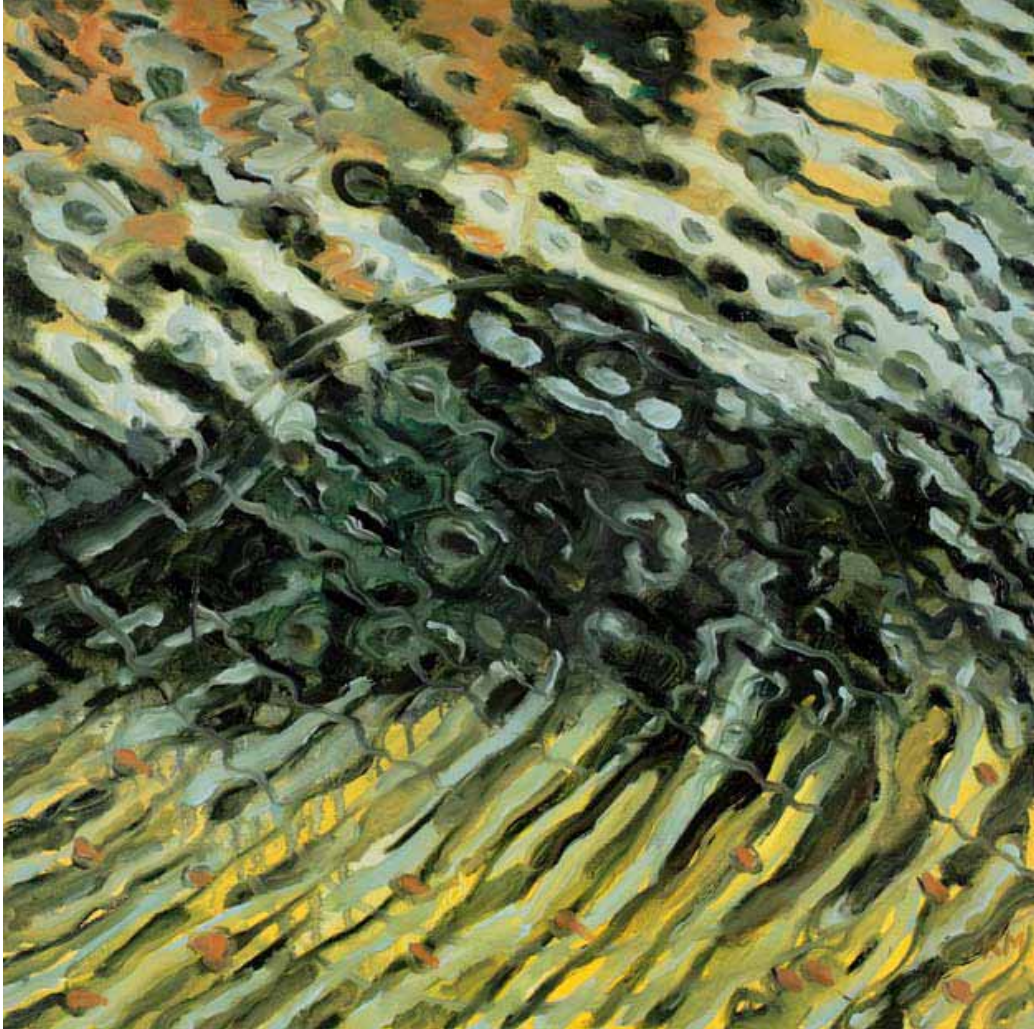
SURFACE: WIND AND THE REFLECTION, 2008 oil on canvas 16 x 16 inches



SURFACE: COVE APRIL 7, 2008 oil on panel 16 x 16 inches



SURFACE: REFLECTION INTERRUPTED BY THE WIND, 2008 oil on panel 16 x 16 inches



SURFACE: COVE, NOV. 10, 2007 oil on panel 15 1/2 x 15 1/2 inches



SURFACE: COVE, DEC 8, HIGH TIDE, 2007 oil on panel 15 1/2 x 15 1/2 inches





SURFACE: COVE, MARCH 18, INCOMING TIDE, 2008 oil on panel 15 1/2 x 15 1/2 inches



SURFACE: COVE AND TWO BRNACHES, 2008 oil on canvas 16 x 16 inches



SURFACE: COVE, JUNE, 2008 oil on canvas 16 x 16 inches



SURFACE: COVE, SKY ON THE WATER, 2008 oil on canvas 16 x 16 inches



SURFACE: BRANCH AND REFLECTIONS, 2008 oil on canvas 6 x 6 inches

## CALDBECK GALLERY

12 Elm St Rockland Maine 04841 207.594.5935 [www.caldbeck.com](http://www.caldbeck.com) [caldbeck@midcoast.com](mailto:caldbeck@midcoast.com)

Hours : Monday - Saturday, 11 - 5pm, Wednesday until 8pm, Sunday 1-5pm