

DOWNWIND 2015 casein on panel 20 x 30 inches

ALAN BRAY

ABOUT ALAN BRAY

ALAN BRAY has earned a national reputation from his hometown of Sangerville, Maine. There, he develops mystical paintings about the phenomena of nature in very familiar scenes. He allows his self-consciousness to dissolve as he lets particularities of place, such as the branching of trees, the drifting and melting of the snow and the meandering of flowing water reveal their structures to him. He incorporates elements of memory and dream to achieve an interconnectedness where what you see folds into what you feel and know. The New Yorker Magazine described his work as “meditations on landscape, rather than attempts to open a window on the world.”

Alan studied at the Art Inst. of Boston, the U. of So. Maine and Villa Schifanola Graduate School of Fine Arts, in Florence, Italy. the Portland Museum of Art, in Portland Maine, gave him the solo show, Redefining Landscape. He has had solo shows at the Center Gallery of the University of So. Maine, The Farnsworth Art Musuem in Rockland, ME, Schmidt Bingham Gallery, in New York, A.V.C. Contemporary Arts Gallery, in New York Barridorf Galleries, in Portland Maine and Gleason Fine Arts, in Portland, Maine and has been represented by the Caldbeck since 2003. He has been included in invitational exhibits across the U.S., in France and in Italy. His work is part of public collections from New York to California. The Art books featuring his paintings and magazines with critical acclaim, while too numerous to list in their entirety here, include Carl Little's Paintings of Maine . Bray's work can also be seen at www.alanbray.com

ARTIST STATEMENT

I have always found it exciting and mysterious to just sit in some ordinary place and give myself to it for hours. I try to be there completely and let that place swallow me up in its rhythm, which goes on every hour of every day with or without me. Doing this I have learned how to be still and alert.

A place reveals itself slowly as layer upon layer of my own self-consciousness dissolves; and the intricate structures of phenomena – the branching of trees – the drifting and melting of snow – the meandering of flowing water – advance and take precedence. The revelation of these and countless other structures in their enormous variety impart to a place its astonishing particularity.

The experience of becoming a part of what you are looking at is compelling and elusive. Because the incomprehensible connectedness of nature lies beyond the physical experience, you have to rely on resources that are as much the province of memory and dream as of your skills as an observer. The process of achieving a role in that connectedness is one in which intimacy and affection serve to reorder the experience of place.



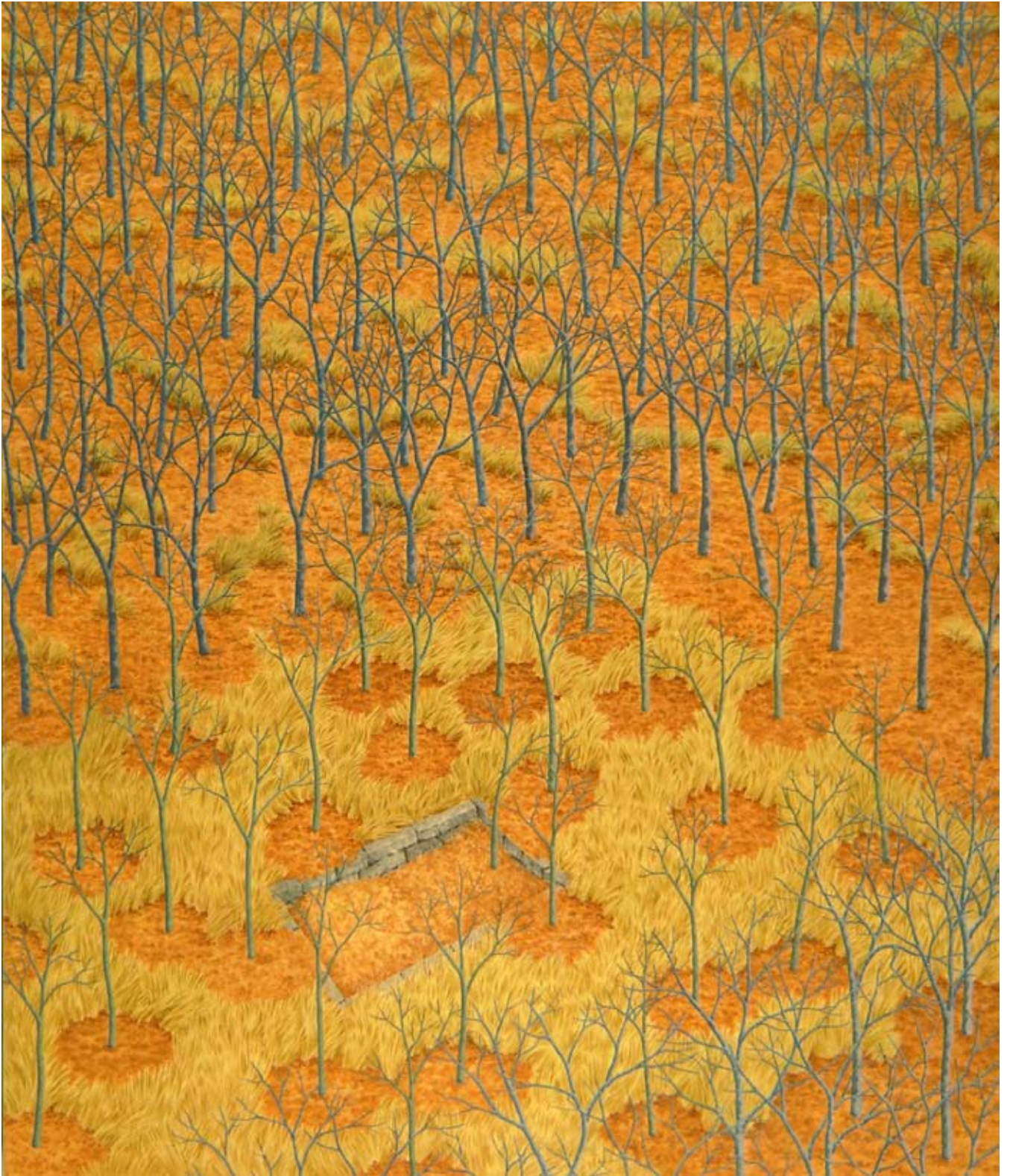
THE INDUSTRIAL FOREST 2015 casein on panel 22 x 16 inches



CLEARCUT WITH WILDLIFE TREES 2015 casein on panel 18 X 24 inches



WINTER'S FALSE START 2014 casein on panel 20 x 24 inches



GHOSTS 2013 casein on panel 24 x 20 inches

Caldbeck Gallery is pleased to present these works by Alan Bray for the 2015 season.

These paintings may be seen at the gallery anytime, and will be on exhibit from August 19 - September 26, 2015.

We look forward to seeing you.

Jim, Cynthia, Nancy and Krisanne

CALDBECK

caldbeck@midcoast.com 12 elm street rockland maine www.caldbeck.com
207.594.5935

Tuesdays - Saturdays 11-4 / Sundays 1-4