



LOIS DODD

Selected Paintings

“Vermont, New Hampshire, and Maine”

July 2 - 27, 2019

Opening Reception: First Friday, July 5, 5-8 pm

Hours: Tuesday - Saturday 11 - 4, Sunday 1 - 4

CALDBECK GALLERY

12 Elm Street Rockland Maine 04841

www.caldbeck.com 207 594 5935 caldbeck@midcoast.com

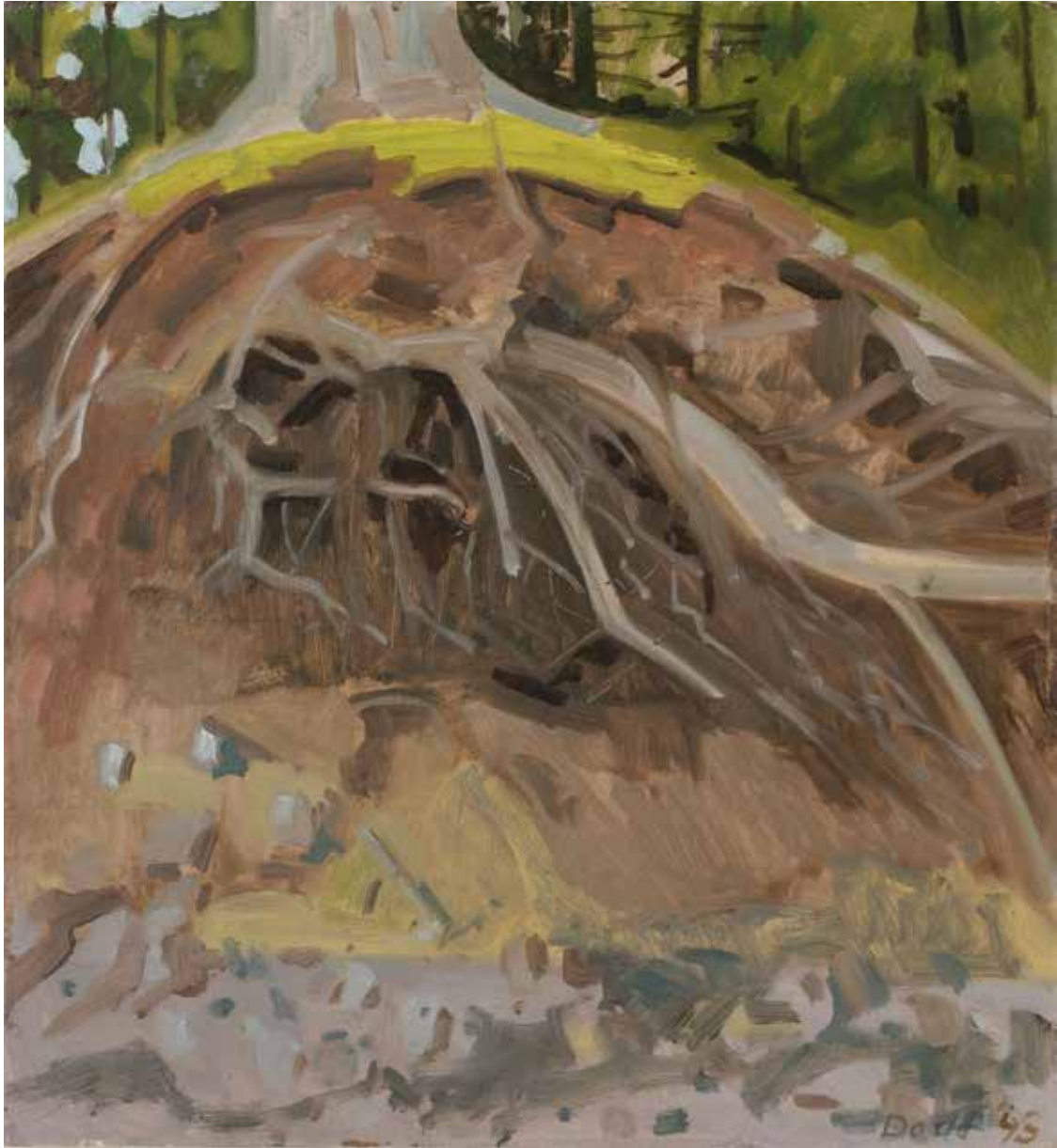
BROAD COVE ON A CLOUDY DAY 2014

oil on masonite 12 x 13 1/2 inches

Photo Credit: Dave Clough Photography



ICE AT POND EDGE 2005
oil on masonite 8 x 11 inches



ROOTS AT WATERS EDGE 1993
oil on masonite 13 x 12 inches



LOWTIDE INLET, THOMASTON 1986
oil on masonite 12 x 20 inches



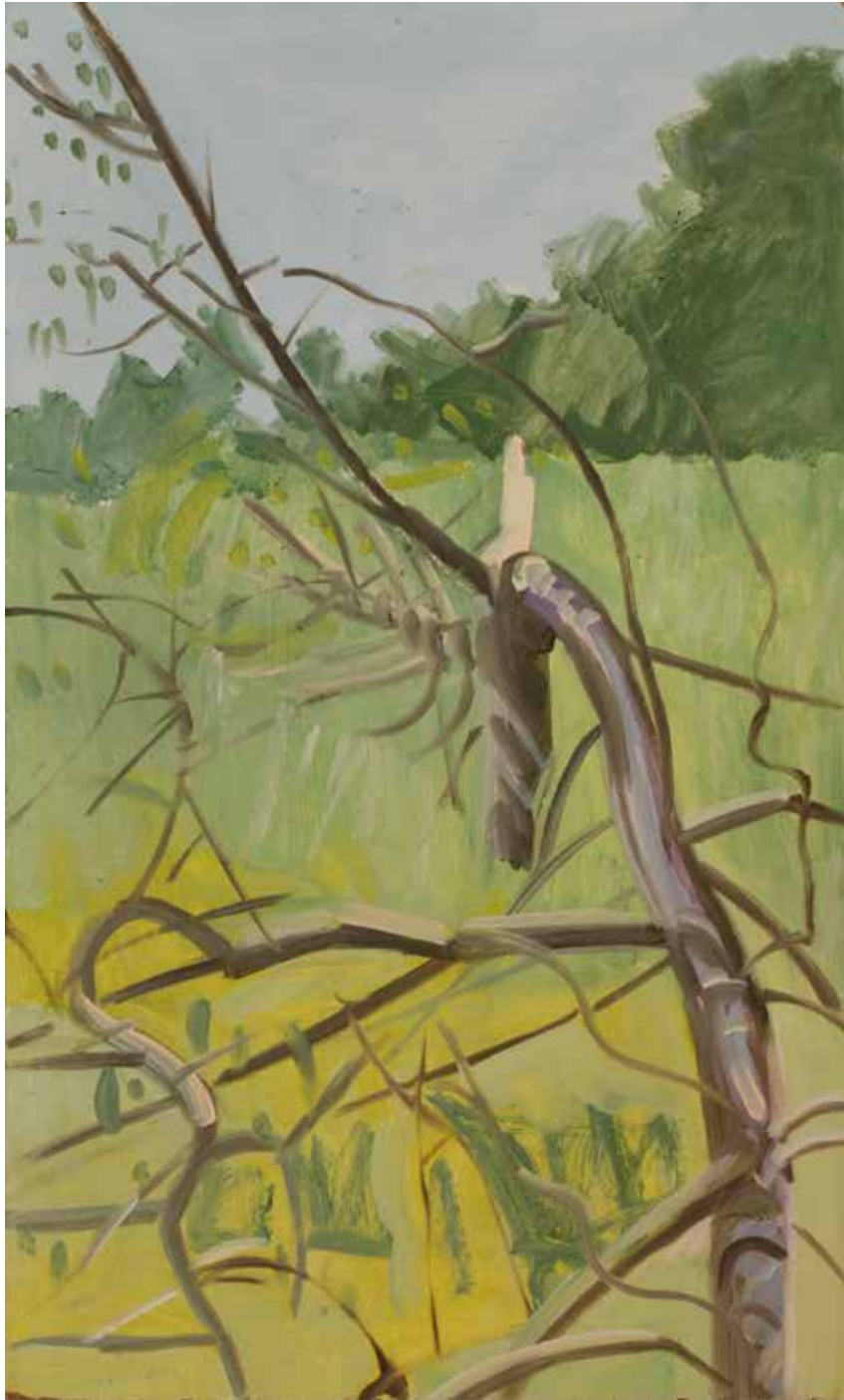
MINK BROOK NEAR THE RIVER, HANOVER, NH, FALL 1990
oil on panel 17 x 17 3/4 inches



WINTER DIAGONAL 1981
oil on masonite 16 x 12 inches



INLET, THOMASTON 1986
oil on masonite 11 x 17 inches



VIEW THRU BROKEN TREE 1986
oil on masonite 20 x 12 inches



WHITE MOUNTAINS, NH 1978
oil on masonite 12 x 25 3/4 inches