

JOHN WOOLSEY  
*Time and Transformation*

September 23 - November 4, 2023

**First Friday Opening: October 6, 5-7 PM**

In conjunction with John Woolsey "*DISTANT VISIONS*"  
at the Zillman Art Museum, University of Maine, Bangor  
September 15 - December 30, 2023

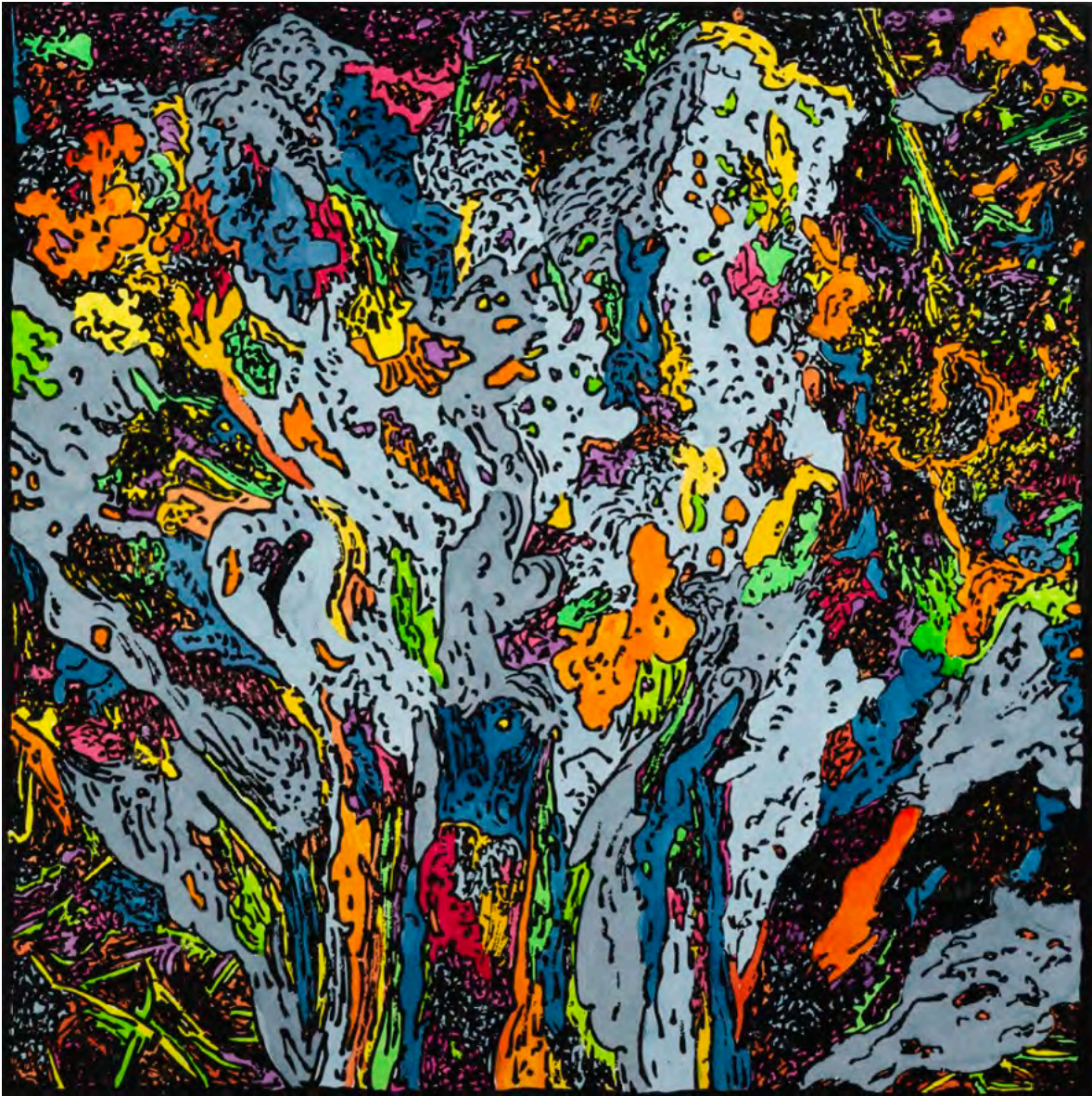
**CALDBECK GALLERY**

12 Elm Street Rockland Maine 04841 (207)594-5935  
email: [info@caldbeck.com](mailto:info@caldbeck.com) [www.caldbeck.com](http://www.caldbeck.com)

“My recent work began with drawings of ancient trees in Japan’s temple gardens. My drawings of these and tree roots, bark, and forest detritus have then gone through transformation to the medium of woodcut prints, and those have, in turn, been transformed into paintings, or cut up and restructured, much as rock is broken and transformed by tectonic forces.”

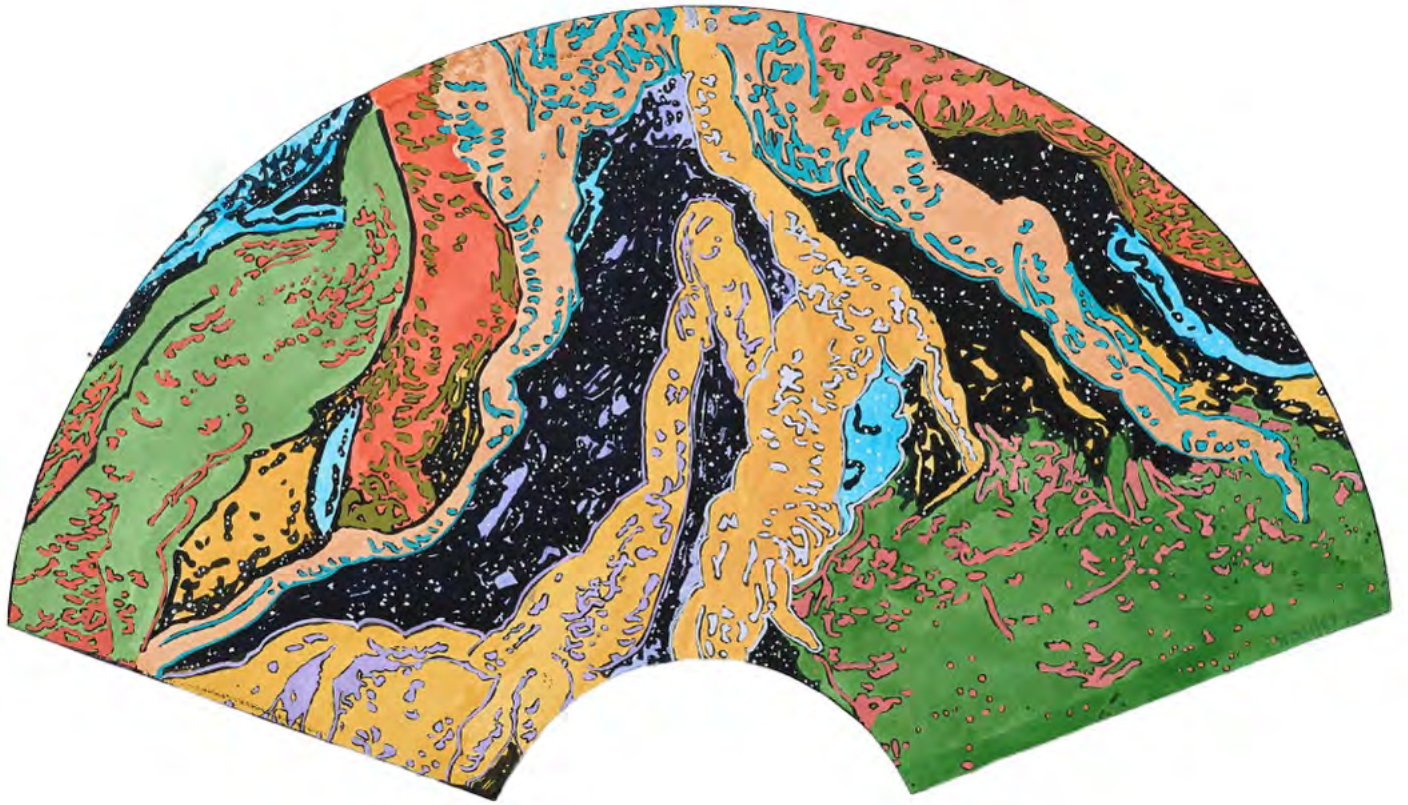
John Woolsey  
September 2023





BUTTRESS #1 2020  
watercolor on woodcut mounted on panel  
18 x 18 inches





SMALL FAN # 15 2023  
watercolor and gouache on woodcut print  
16 3/4 x 9 1/2 inches





FAULTS #1 2022  
watercolor, gouache and acrylic on woodcut collage  
mounted on panel 28 x 35 inches





HANGING GARDEN 2023  
watercolor and gouache on woodcut collage  
mounted on canvas 16 x 12 inches





SMALL FAN #14 2023  
watercolor on woodcut print  
16 3/4 x 9 1/2 inches





HOMAGE TO SAMUEL PALMER 2021  
watercolor and gouache on woodcut collage  
mounted on panel 18 x 18 inches





ARROYOS AND SALT PAN 2023  
watercolor and gouache on woodcut collage  
mounted on canvas 16 x 12 inches





PORT 2023  
watercolor, gouache and acrylic on woodcut collage  
mounted on panel 10 x 8 inches