



Carol Sloane

Mutual Affection

September 6 - October 20, 2024

Opening Reception First Friday

September 6, 5-7PM

CALDBECK GALLERY

12 Elm Street Rockland Maine 04841 (207)594-5935
email: info@caldbeck.com • www.caldbeck.com

image: JUNE BUG & MATT oil on canvas 12 x 12 inches

These paintings are studies of mutual affection.

When one soul is four legged and one is two legged, the bond between domestic partners is simple and yet extraordinarily powerful. The devotional attachment is nonjudgmental. Accommodation is the rule. These paintings are studies of people I know who consider their 'pets' to be more than just family members. Their mutual support has sustained them in difficult times, and my paintings bear this witness.

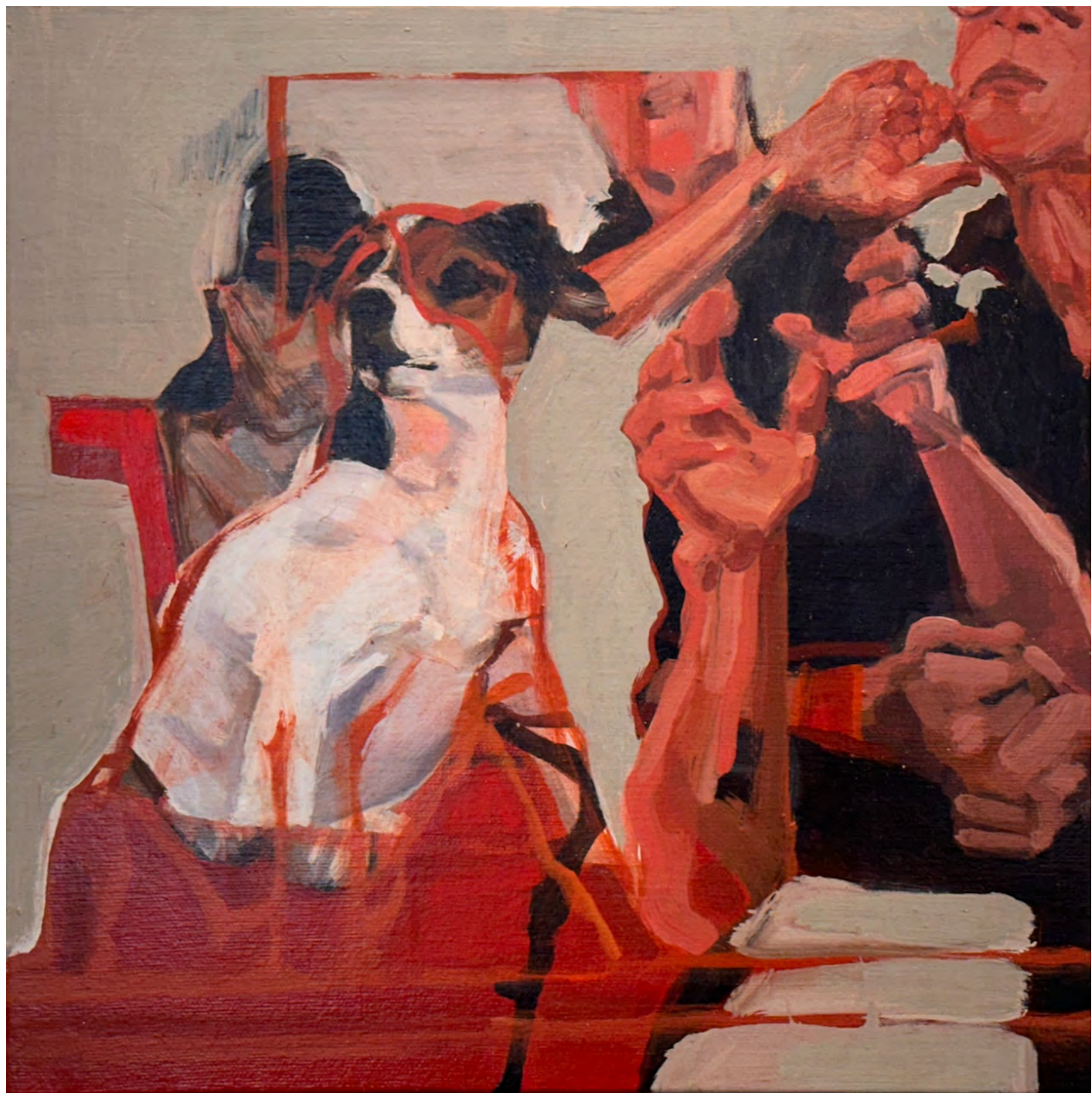
An essential layer of the human and animal attachment phenomenon is the healing action of touch and caring that the partners give each other. It is so obvious that it can be easily taken for granted, but it is an exceptional and generous gift.

Carol Sloane
2024



VEE JAY AND GLENICE

oil on canvas
12 x 12 inches



IVY AND ANN

oil on canvas
12 x 12 inches

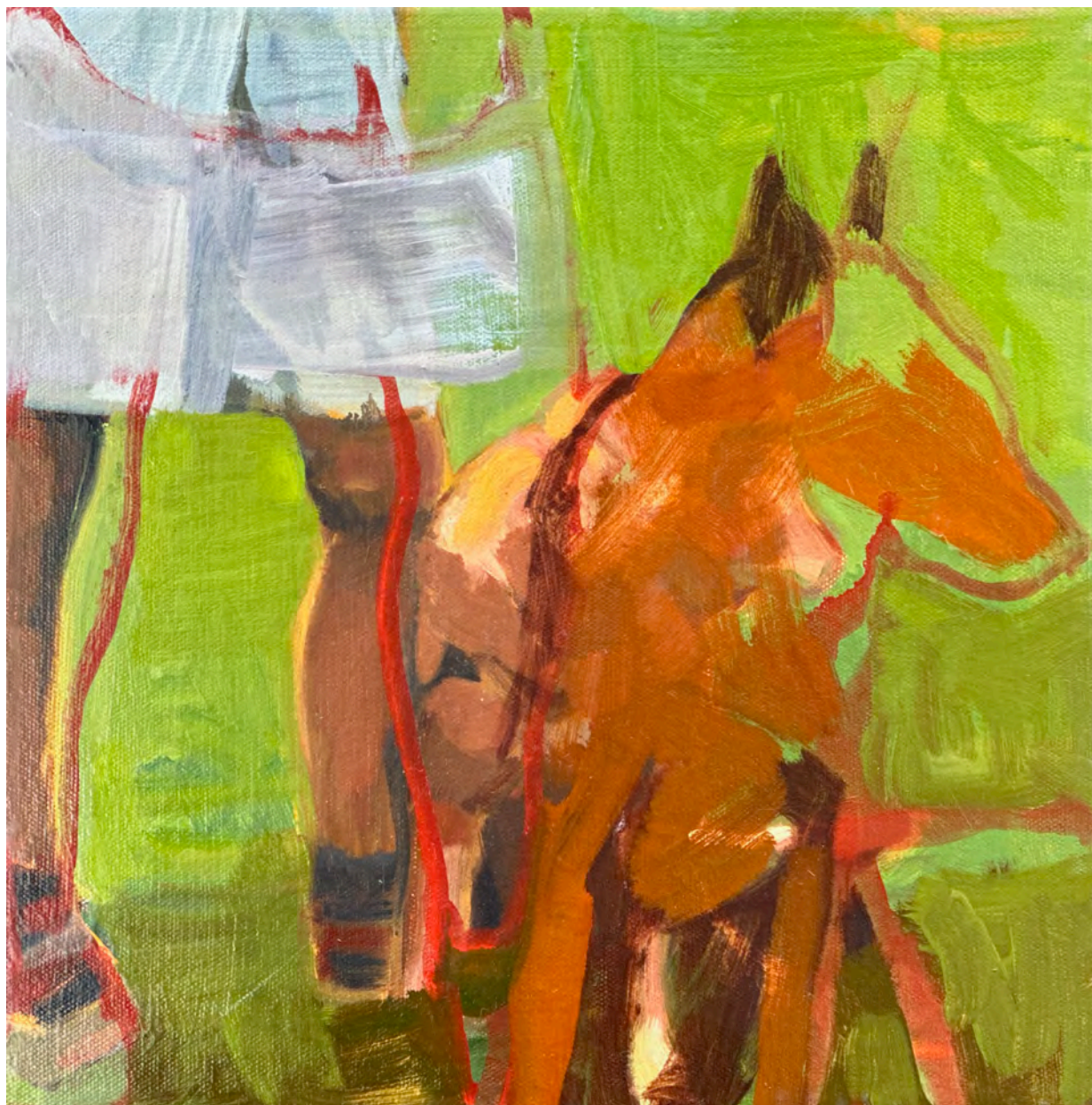


ANN AND CAT

oil on canvas
12 x 12 inches



MARVIN AND MEGAN
2005
oil on canvas
44 x 42 inches



WILLIE AND GLENICE

oil on canvas
12 x 12 inches



UNTITLED

oil on canvas
12 x 12 inches



EDDIE AND ROSE

oil on canvas
12 x 12 inches



TAR AND JAMES
2005
oil on canvas
42 x 44 inches



MADISON AND SHARON

oil on canvas
12 x 12 inches



UNTITLED (Ann and Red Hat and Cat)

oil on canvas
12 x 12 inches