



Elizabeth Awalt

Natural Selections

May 17 - June 22, 2025

First Friday Opening

June 6, 2025, 5-7PM

CALDBECK GALLERY

12 Elm Street Rockland Maine 04841 (207)594-5935
email: info@caldbeck.com • www.caldbeck.com

image: APRIL MAGIC 2015 oil on canvas 60 x 80 inches

NATURAL SELECTIONS

A lifetime of immersing myself in landscapes, both in plain air and underwater, has allowed me to gain an intimacy with the natural world as witness, observer, and recorder. I consider my paintings a conduit to experiences in nature, a way to explore the dynamic evolution of a range of environments.

I've always been drawn to watery places where the light, color and forms are both recognizable and abstract. My paintings reflect the heightened sensation of these universes and evolve like living organisms, developing their own ecologies.

In the studio I layer, pour, and scrape away paint, inviting immediacy and memory to exist in equal parts. This process echoes cycles of organic growth and decay and current destructive impacts on our environment. In the end, I always come back to the physicality of my materials; the sensuous quality of oil paint expresses what I've seen and felt in my encounters with nature. I create these paintings to invoke a world of beauty, chaos, and turbulence, and to invite viewers to take note of their surroundings whether on land or beneath the waves.

Liz Awalt
April 2025



SPRING RISING
2024
oil on linen 45 x 39 inches



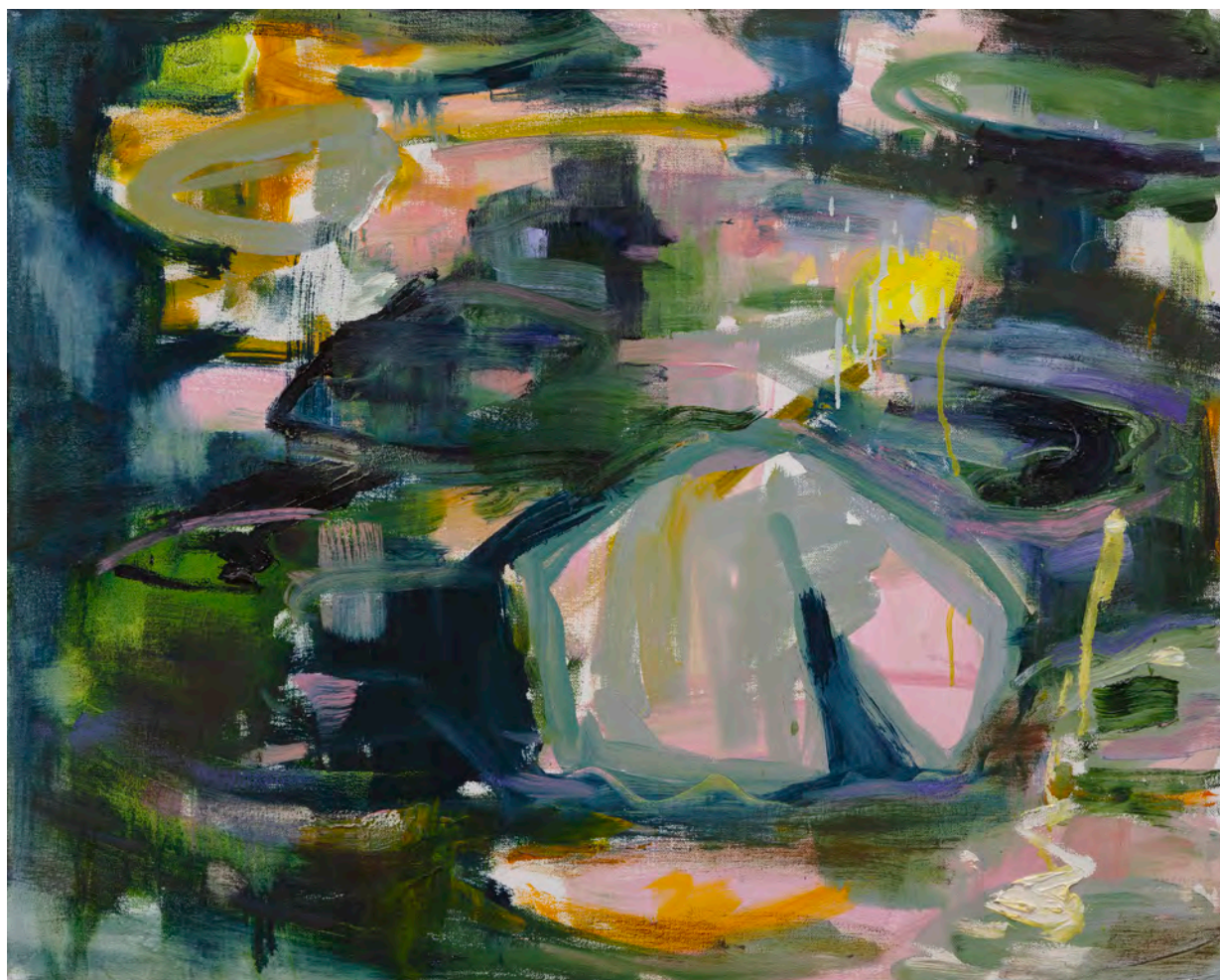
SURGE
2024
oil on linen 38 x 45 inches



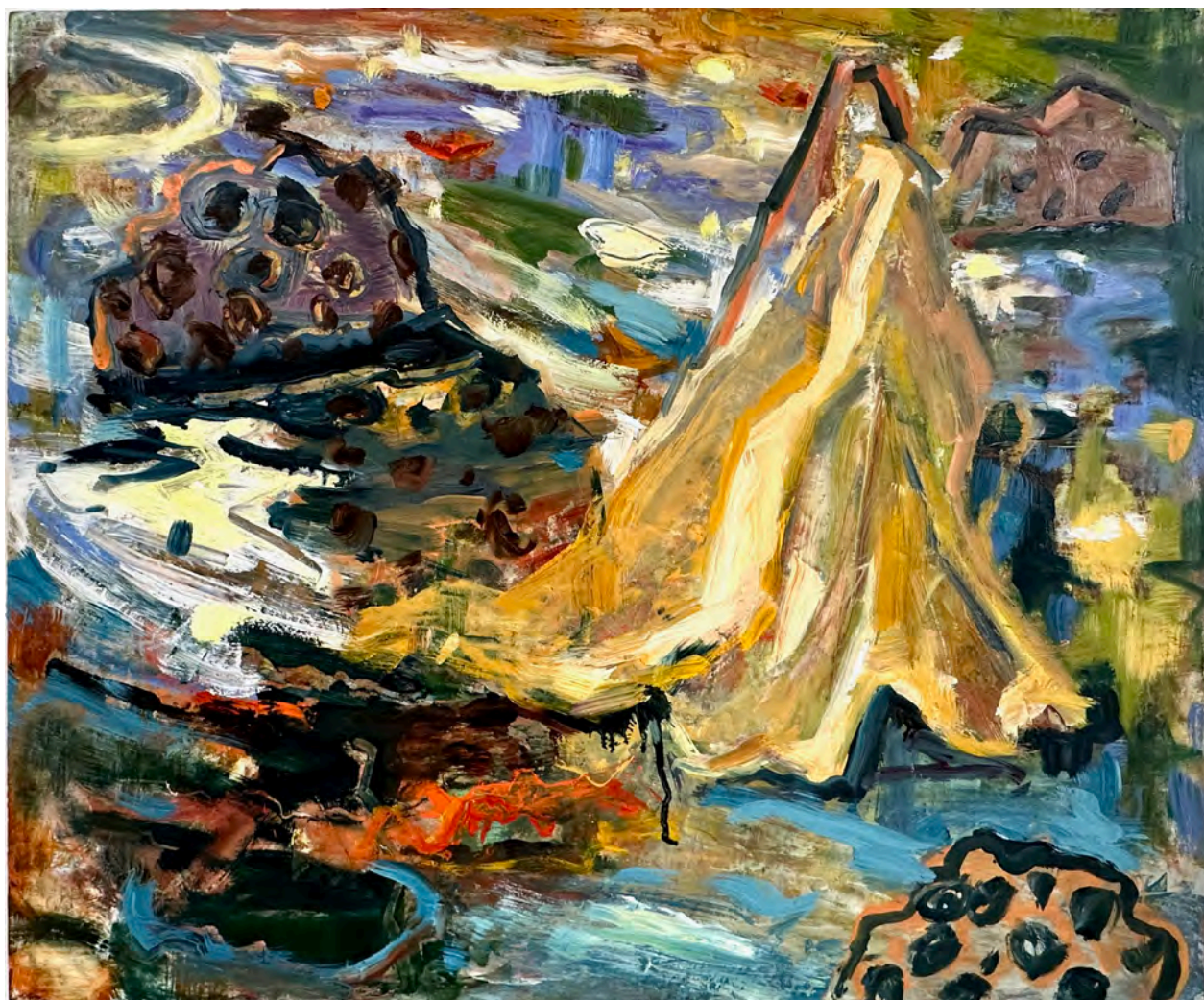
INTO THE DEEP
2023
oil on panel 12 x 12 inches



DRAGONFLY
2025
oil on wood 20 x 16 inches



EVENING POND
2024
oil on canvas 24 x 30 inches



FALLEN LOTUS
2025
oill on panel 20 x 24 inches



NIGHT DIVE 1
2023
oil on panel 12 x 12 inches



NIGHT DIVE 2
2023
oil on panel 12 x 12 inches



COTTON GRASS
2025
oil on panel 12 x 12 inches



PILLAR CORAL
2024
oil on linen 50 x 60 inches



VIEW FROM FROM THE KAYAK
2025
oil on panel 16 x 20 inches