

# 3 PAINTERS



Bayard  
HOLLINS

Jim  
KINNEALEY



John  
SCHMIDTBERGER

June 4 - June 28, 2026  
**First Friday Opening**  
**June 5, 2026 5-7PM**

## CALDBECK GALLERY

12 Elm Street Rockland Maine 04841 (207)594-5935  
email: [info@caldbeck.com](mailto:info@caldbeck.com) • [www.caldbeck.com](http://www.caldbeck.com)

# THREE PAINTERS

## BAYARD HOLLINS

The ground beneath our feet at this point in history can no longer be held within the traditional language of painterly realism. A shift is happening. We are being propelled toward a new understanding of ourselves and the world we inhabit. We can no longer fully trust our eyes and must instead rely on feeling our way through. The jagged edges of this new reality place us on the precipice of an abstract world of our own making, while the memory of the past lingers like a dream.

## JIM KINNEALEY

I work to describe sound and stillness. My paintings are about habitat. I paint to describe my deep awe and gratefulness for nature. I look out to a cathedral of joy.

## JOHN SCHMIDTBERGER:

I'm very interested in economy. I compose with elements (shapes) and the way they interact with each other and the edges of the canvas. I like to emphasize movement and gesture across the picture plane, and often use marks to create a rhythmic pattern. Above all I use color in a purposely interactive manner, placing contrasting hues next to each other to create vibration and energy.

My most important influences are Fairfield Porter, Edward Hopper, Louise Matthiasdóttir, Marsden Hartley and Rockwell Kent.

Cover images:

FIRST SNOW by Bayard Hollins

EDGE OF THE WOODS by Jim Kinnealey

JACK PINES by John Schmidtberger

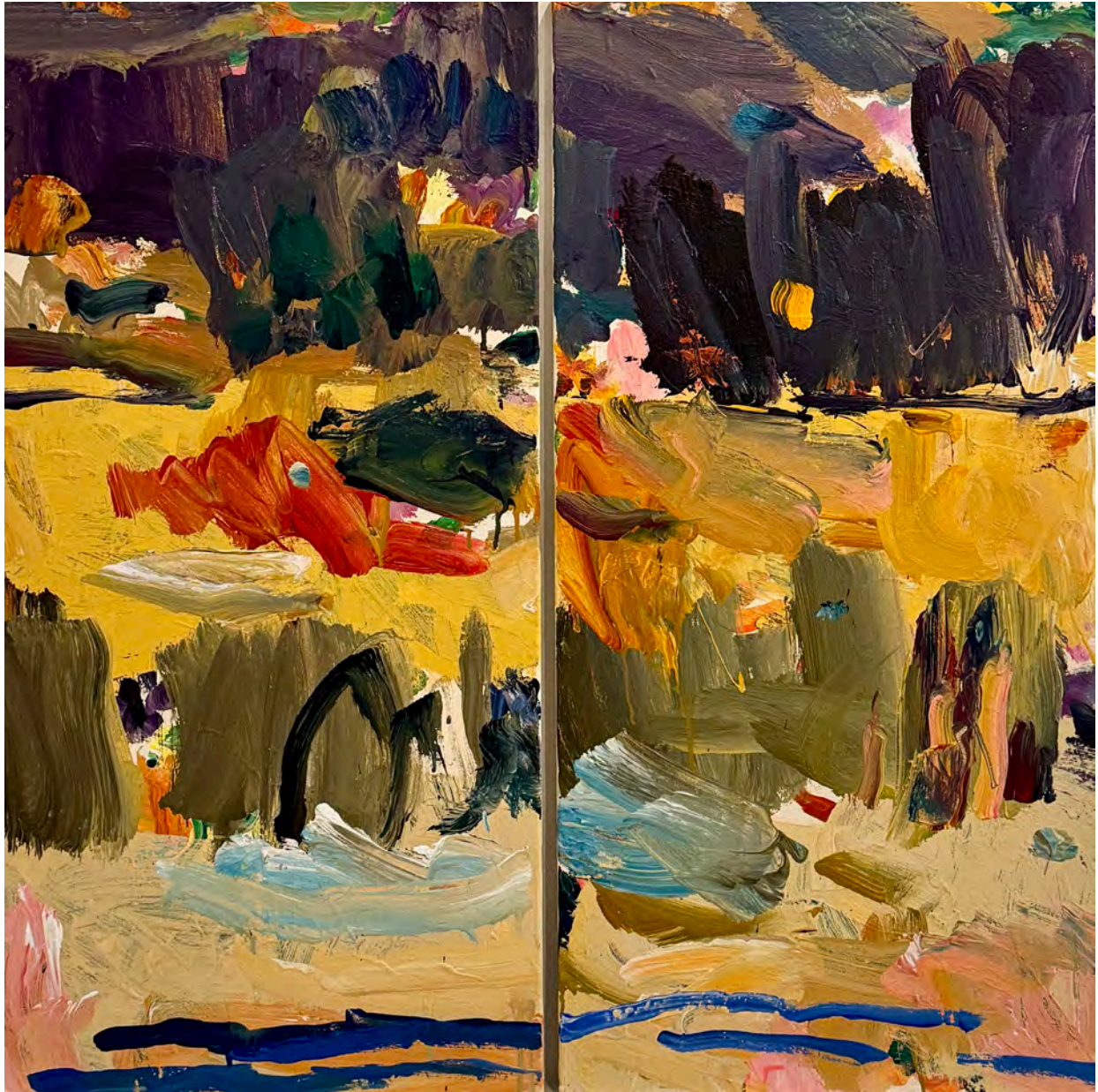


NOVEMBER BLUEBERRY BARRENS 2025

acrylic on canvas

36 x 36 inches

Bayard Hollins



ROUGH COAST 2025  
acrylic on canvas  
36 x 36 inches

Bayard Hollins



WHITE HORSE 2025  
acrylic on canvas  
36 x 24 inches

Bayard Hollins



DECEMBER 2026  
acrylic on canvas  
24 x 24 inches

Bayard Hollins



LOOKING OUT ACROSS THE BAY 2025  
watercolor/paper  
22 x 30 inches

Jim Kinnealey

photo credit: And Again\_Docu



SEARSMONT 1994  
watercolor/paper  
12 x 9 inches

Jim Kinnealey



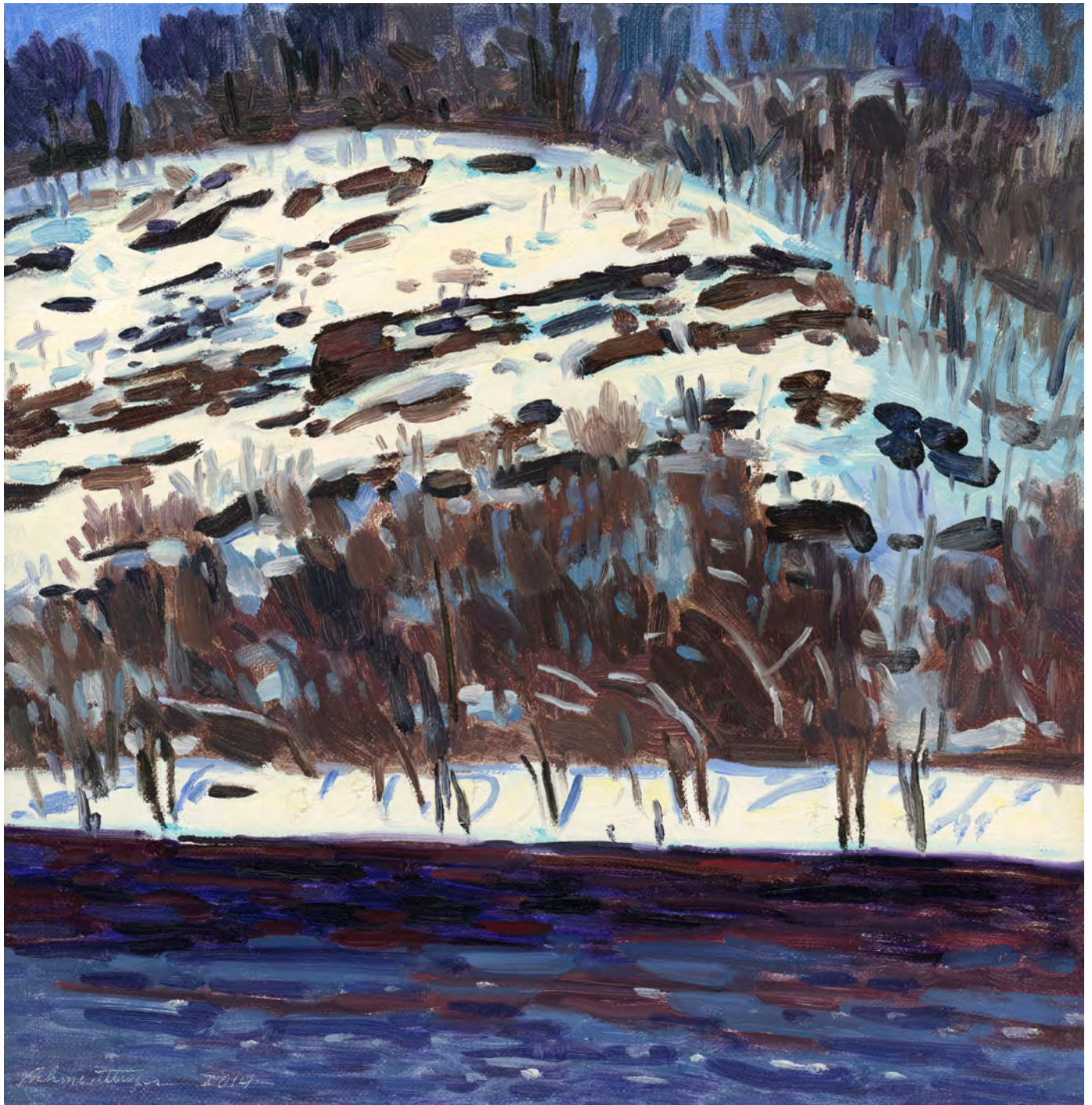
RACHEL CARSON PRESERVE n.d.  
ink/paper  
18 x 24 inches

Jim Kinnealey



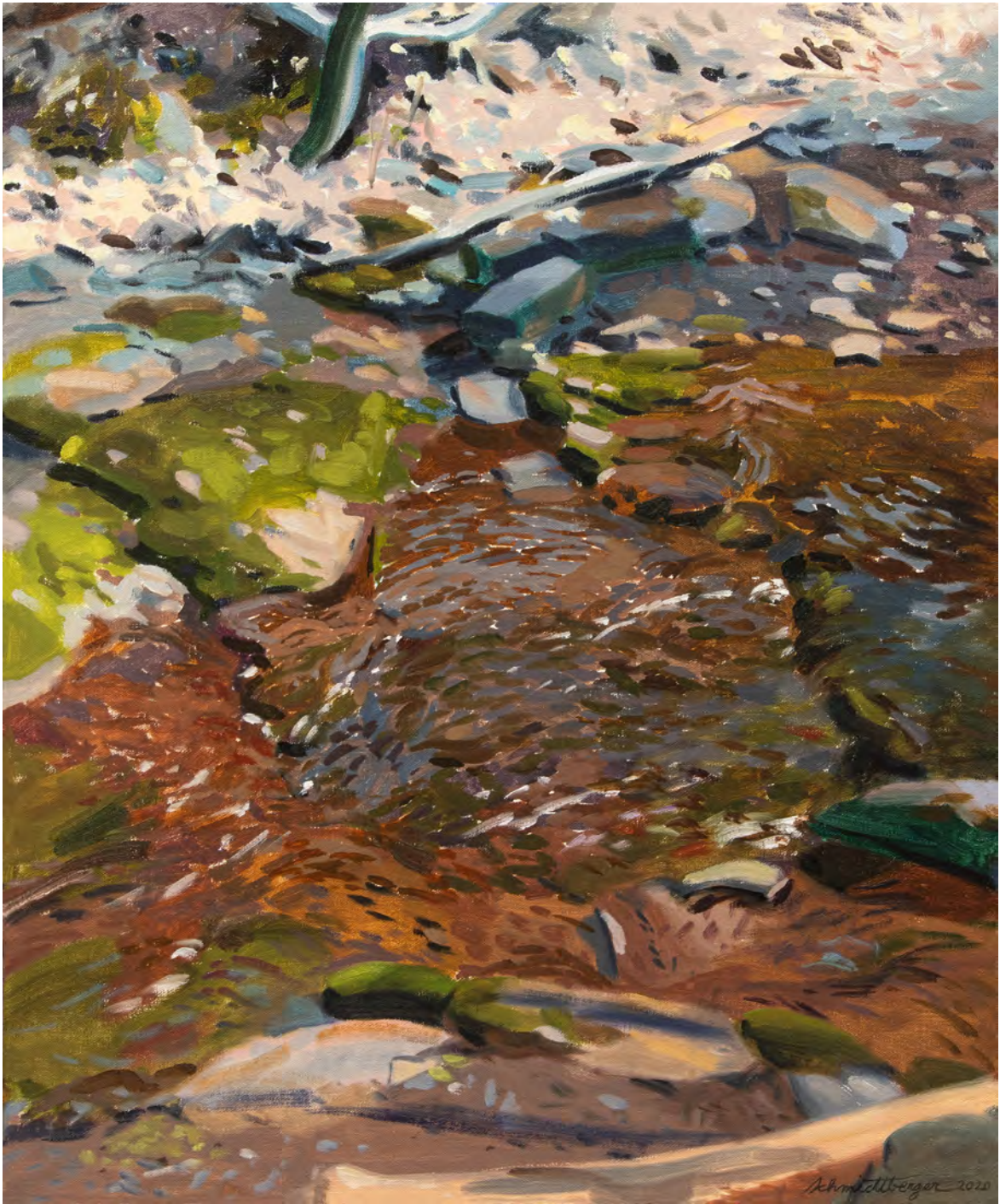
SNOW'S POINT 1993  
watercolor/paper  
22 x 30 inches

Jim Kinnealey



TOO COLD TO PAINT OUTSIDE 2014  
oil on canvas  
12 x 12 inches

John Schmidtberger



STREAM 2020  
oil on canvas  
24 x 20 inches

John Schmidtberger



ISLANDS AND SEAWEED, GOULDSBORO 2023  
oil on panel  
18 x 24 inches

John Schmidtberger



SCHOODIC WAVES BUILDING 2024  
oil on linen panel  
12 x 12 inches

John Schmidtberger